

ClickOnce is a Microsoft deployment technology that installs the application with minimal user interaction. ClickOnce brings the ease of deployment of Web applications to the Windows user. In addition, ClickOnce solves three issues with conventional deployment models:

- **Difficulty in updating the application:** The ClickOnce deployment is hosted from a Web site. There are no files to download and manage.
- **Impact of an application on the user's computer:** ClickOnce-deployed applications are installed per-user, not per-machine. Each ClickOnce application is isolated from the other and cannot interfere with or overwrite other applications.
- **The need for administrator permissions:** No administrator privileges are required for installation because a ClickOnce-deployed application is isolated and does not affect shared components or other applications on the machine.

## Requirements

---

---

**NOTE** The ClickOnce installer must be run by the Windows user who intends to use the software. An administrator cannot install the software for other users.

---

**Table 1** *Renesource Capital FX Professional ClickOnce Deployment Requirements*

<b>Internet Connectivity</b>	Required	Internet access to <a href="http://renesource.integralsupport.com/">http://renesource.integralsupport.com/</a>
<b>Network Connectivity</b>	Minimum	128 Kbps connection
	Recommended	Fractional T1 (512 Kbps)
<b>Network Security</b>	Supported	HTTPS with SSLv3 (2048-bit encryption)
<b>Hardware</b>	Minimum	Pentium III 600 MHz processor with 1 GB RAM
	Recommended	Pentium III 1.0 GHz processor (or faster) with 2 GB RAM (or higher)
<b>Operating System</b>	Supported	<ul style="list-style-type: none"> <li>■ Windows 7</li> <li>■ Windows Vista</li> <li>■ Windows XP (SP3)</li> </ul>
<b>Display Settings</b>	Required	Your display must be set to 96 DPI. For information about how to configure your display, search for the keywords “increase decrease DPI” in your operating system’s online help.
<b>Software</b>	Required	Microsoft .NET Framework 3.5 SP1 (Windows administrator privileges are required to install .NET.) A download link is provided on the Renesource Capital FX Professional ClickOnce deployment page.

## Installing Renesource Capital FX Professional

**NOTE** The ClickOnce installer must be run by the Windows user who intends to use the software. An administrator cannot install the software for other users.

### **To install Renesource Capital FX Professional:**

- 1 Use your Web browser to navigate to the following site:

<http://renesource.integralsupport.com/>

The Renesource Capital FX Professional support site opens.

- 2 Enter the following username and password and click **LOG IN**:
  - ❑ Username: renesource
  - ❑ Password: WelcomeRenesource
- 3 Click **Downloads** in the top right of the page.

The Renesource Capital FX Professional download page appears.

A private FX trading system for Spot, Outrights and Swaps A direct market access FX system that combines pricing from your liquidity providers with algorithmic trading to give you maximum liquidity and best execution Your best choice for market aggregation

**System Requirements**

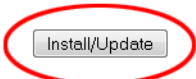
**Network Connectivity:** Minimum 128 Kbps connection  
Recommended Fractional T1 (512 Kbps)

**Hardware:** Minimum Pentium III 600 MHz processor with 1 GB MB RAM  
Recommended Pentium III 1.0 GHz processor (or faster) with 2 GB RAM (or higher)

**Operating System:** Windows 7  
Windows Vista  
Windows XP

**Software:** Application requires Microsoft .NET Framework 3.5 SP1  
[Click here](#) to get the .NET Framework 3.5 SP1

**Size:** 80K



[Clickonce Guide](#) Provides a step by step guide to installing the clickonce installer.

[Release Guide](#) Provides walk through of the new features in this release

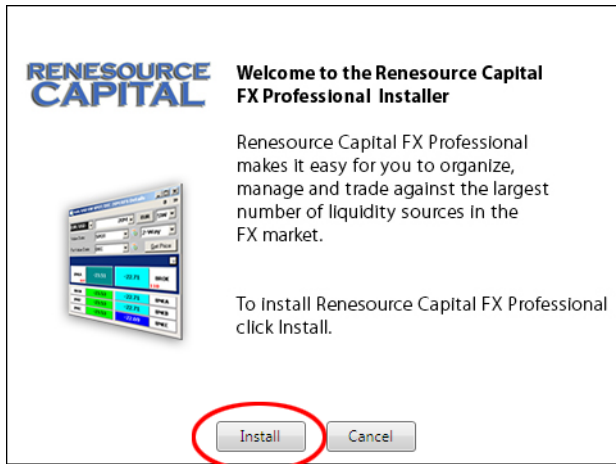
[Trading Quick Start Card](#) Provides a snap-shot and features to help you get started with trading quickly and efficiently

- 4 Click the **Install/Update** button.

Your Web browser opens a window asking you to confirm the download of the ClickOnce.exe executable file.

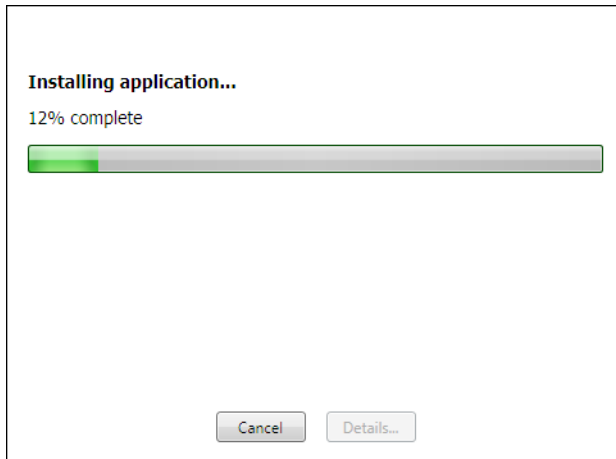
- 5 Depending on your Web browser, choose to run the file or save the file and then run it.

The Renesource Capital FX Professional ClickOnce installer window opens.

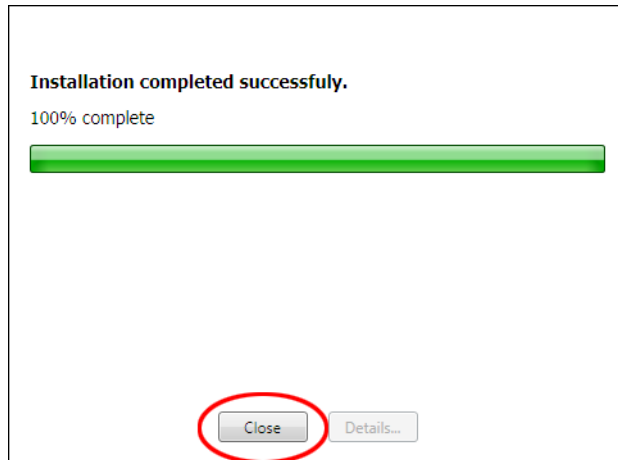


- 6 Click **Install**.

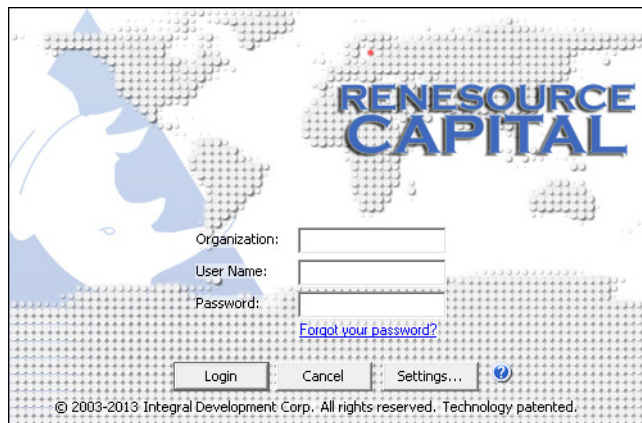
This installer window displays a progress bar.



- 7 When the installation is complete, click **Close**.



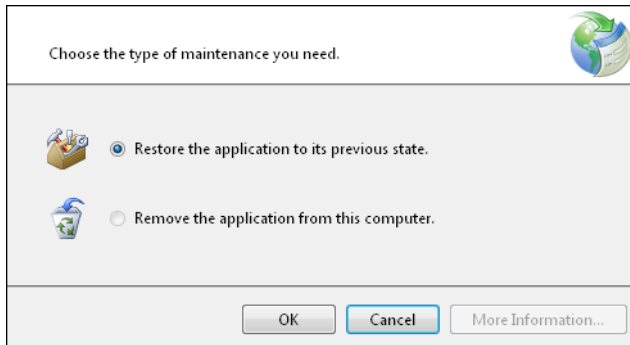
The Login window opens.



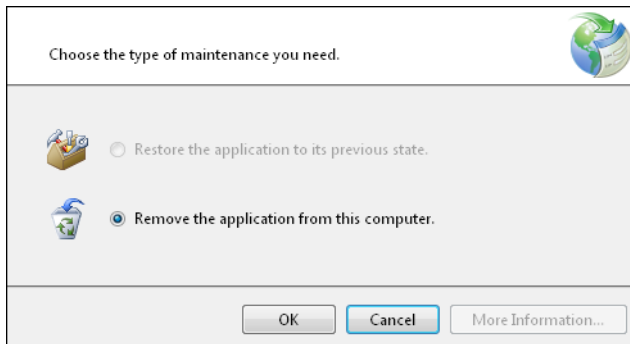
- 8 Click **Settings...** to verify host and connectivity information, if applicable.

## Uninstalling Renesource Capital FX Professional

You uninstall Renesource Capital FX Professional from the Windows Control Panel. The last two versions are preserved on your workstation, giving you the option to uninstall the application completely or to restore the previous version:



If only one version is installed on your workstation and no update has occurred since the first installation, then you only have the option to remove/uninstall the application:



## Contacting Support

---

You can contact Renesource Support in these ways:

- E-mail [support@renesource.com](mailto:support@renesource.com)
- Call +371 67092737.
- Call +371 67092732 (Europe).